

Fish Creek Storm Water Pollution Prevention Plan

for:

Fish Creek Quarry

M10-01960

IPDES Permit Tracking Number:IDR05J00J

SWPPP Preparation Date:

April 1, 2025

Primary SWPPP Contact

Dan Thomas
4040 S. 300 W.
Salt Lake City, UT 84107
801-747-7200
Prepared by: Dan Thomas



Star Stone Quarries, Inc.
4040 S. 300 W.
Salt Lake City, UT 84107

Table of Contents

1. CONTACT INFORMATION	3
1.1. Storm Water Team	3
2. NATURE OF CONSTRUCTION ACTIVITIES	3
2.1. Site Estimates	3
2.2. Mining Activity Descriptions	4
2.3. Phase/Sequence of Construction Activity	4
2.4. Maps	5
3. WATER QUALITY	5
3.1. Discharge Information	5
3.2. Receiving Waters	5
4. POLLUTION PREVENTION STANDARDS	5
4.1. Potential Sources of Pollution	5
4.2. Natural Buffers or Equivalent Sediment Controls	6
5. EROSION, SEDIMENT, POLLUTION CONTROLS – BMPS	6
5.1. List of Erosion, Sediment, Pollution BMPs on Site	6
5.2. Maintenance	7
5.3. Active Mine Plan for Erosion Control	8
5.4. Reclamation Plan for Erosion Control	8
6. SPECIAL CONDITIONS	8
7. Visual Monitoring and Inspections	8
7.1. Inspections	8
7.2. Corrective Actions	9
8. RECORDKEEPING	9
8.1. Recordkeeping	9
9. CERTIFICATION	9
SWPPP APPENDICES	10

Storm Water Pollution Prevention Plan

1. CONTACT INFORMATION

1.1. Storm Water Team

This plan has been prepared in accordance with the guidelines for the Department of Environmental Conservation Division of Water guidelines. The Storm water team will lead and put into practice all planned activities in this Storm Water Pollution Prevention Plan.

Owner

Dan Thomas
801-747-7200
dthomas@starstonesales.com

Site Supervisors

Rex Larsen
801-747-7200
rlarsen@starstonesales.com

Alberto Castaneda
801-747-7200
acastaneda@starstonesales.com

Alberto Chairez
801-747-7200
admin@starstonesales.com

Gustavo Chairez
801-747-7200
admin@starstonesales.com

Tiffany Larsen
801-747-7200
tlarsen@starstonesales.com

Sidney Harrison
801-747-7200
sharrison@starstonesales.com

2. NATURE OF CONSTRUCTION ACTIVITIES

2.1. Site Estimates

The following are estimates for the mine site.

Total area: 50 Acres

Quarry area to be disturbed: 15 Acres

2.2. Mining Activity Descriptions

This is a dimensional stone quarry operation that has been in operation for over 40 years. Material is mined with excavators and loaders and hand processed before stacking on pallets and loading onto trucks. Typical site business days and times: M-F 8-6

2.3. Phase/Sequence of Construction Activity

Phase I

Site preparation including access roads, berms, catchment basins, diversion ditches, etc

Access Road Construction – New road to be built on even and accessible grade

(the previous road was 13% grade). Gravel will be spread on the new road to allow for safe travel and limit stormwater erosion. Stockpiling of topsoil for future reclamation. No natural water sources exist on this site other than storm runoff. Therefore, efforts directly focus on properly planning and maintaining runoff areas. All runoffs drain down into a retention pond.

Phase II

Active mining operations. Commencing June and finishing November. Upkeep and maintenance on the access roads. Daily Inspections. Materials that are stored on-site include: Oil, Hydraulic Oil, and Anti-Freeze. Materials are stored so as to minimize spillage when filling equipment. To ensure proper implementation of this plan all employees are trained in the following:

- Material handling safety
- Spill prevention
- Spill response
- Proper disposal of materials
- How to check for potential hazards
- How to check for proper storm runoff remediation
- Specific responsibilities for certain aspects and checkups on the work site

As many of our employees are new and still in initial training periods, this training will be easy and natural to fit into daily work schedules. By completing a well-rounded training of all site employees, we can

ensure a much healthier and safer environment for everybody. Through this training we can enumerate to each employee the goals of this storm water pollution prevention plan and create a greater awareness of proper environmental concerns.

Phase III

Reclamation, recontouring, topsoil placement, reseeding. Will occur simultaneously and concurrently with the mining phase as operation progresses.

2.4. Maps

The SWPPP site map(s) are included as Appendix A.

3. WATER QUALITY

3.1. Discharge Information

This site does not discharge storm water into a Municipal Separate Storm Sewer System (MS4). No Stormwater is discharged from the site.

3.2. Receiving Waters

Through effective watershed planning, there are no waters that receive a sediment laden discharge from this facility.

4. POLLUTION PREVENTION STANDARDS

4.1. Potential Sources of Pollution

<u>Activity</u>	<u>Pollutants or Pollutant Constituents</u>	<u>Location</u>
Driving on Road	Dirt	Access Road
Operating Equipment	Dirt	Mine Site
Equipment Fueling	Diesel Fuel	Mine Site
Equipment Maint.	Hyd/Motor Oil, Antifreeze	Mine Site
Palletized Rock Storage	Dirt	Storage Areas
Overburden	Dirt	Storage Areas

4.2. Natural Buffers or Equivalent Sediment Controls

There are no surface waters within 50' of the site.

5. EROSION, SEDIMENT, POLLUTION CONTROLS – BMPS

5.1. List of Erosion, Sediment, Pollution BMPs on Site

Non-Structural BMPs

BMP	Application	Implementation
Good Housekeeping	Keep all exposed areas of the facility in a clean, orderly manner where such exposed areas could contribute pollutants to stormwater discharges (trash, storage areas, loading area, waste piles).	Inspection and evaluation of yard to clean up trash and potential hazards. Storing materials so as to minimize leakage. Using small jugs to transport oils for maintaining machines. Daily Quarry Working face Inspection. Daily equipment inspection.
Minimizing Exposure	Materials and activities should be protected by storm resistant shelters to prevent exposure to rain, snow, snowmelt or runoff.	Oils and antifreeze have been stored in an approved manner .
Preventive Maintenance	Timely inspection and maintenance of stormwater management devices. Inspection, testing, maintenance and repairing of equipment and systems to avoid breakdowns or failures that could result in discharges of pollutants to surface waters. Training employees in best practices techniques.	Inspection of fuel containment devices and sediment catch basins. Annual Employee Training and Re-certification
Minimizing Erosion	Limiting erosion is the best way to limit sediment migration.	Install dykes around active areas, water bars on roads, and sediment catch basins near the lower end of property.

Spill Prevention and Response Procedures	Procedure for cleaning up spills or leaks which includes material handling procedures, storage requirements, secondary containment, and equipment that will be used to minimize spills or leaks.	Fuel and service equipment in a prepared area.
Routine Facility Inspections	To ensure that operations will not harm the environment, we will perform inspections.	A Storm Water Team member will regularly inspect all areas of the facility where industrial material or activities are exposed to stormwater.

Structural BMPs

BMP	Application	Implementation
Sediment Catch Basins	Stormwater detention structures, retention structures, flow attenuation via open vegetated swales/natural depressions, infiltration of runoff.	Construct sediment traps and water bars.
Dust Control	Water is applied where and when needed to reduce dust.	Due to the limited activity, very little dust control is needed. If dust control is needed, either water will be applied or activity will temporarily cease.
Landgrading	During the reclamation phase, landgrading will be used to reshape the surface to meet post mining uses.	Dozer loader and/or excavator to regrade ground.
Surface Roughening	During the reclamation phase, surface roughening will be used to aid in the establishment of vegetative cover.	Dozer and/or excavator to roughen surface.

5.2. Maintenance

Any item identified in a site, routine or comprehensive inspection will be maintained prior to the next anticipated storm event or will be scheduled and accomplished as soon as practicable.

5.3. Active Mine Plan for Erosion Control

Erosion control measures are currently in place to help eliminate soil erosion and control stormwater runoff.

1. Water bars have been installed in multiple locations on the site in order to reduce any potential of erosion on the mine site. To reduce velocity, water bars divert water into rock check dams.
2. Sediment catch basins with rock check dams are installed at the lower end of the active area near the entrance to the property to stop sediment from migrating from the property.
3. Earthen dikes are installed around the perimeter of the disturbed areas to reduce run off.

5.4. Reclamation Plan for Erosion Control

1. The overburden and unusable material, which has been collected while mining, will be pushed up from storage piles toward the highwall face of the mine. This will put a positive grade on the quarry floor so that it will be free draining. Material will be regraded to the proper grade. Then topsoil will be spread over the regraded area to a minimum thickness of 6 inches. The highwall will be regraded to $\leq 45^\circ$.
2. Sediment catch basins are used to control storm water on the property. They will continue to be used after final reclamation.
3. Revegetation and seeding materials will include seed mix as stated in the state approved mine plan.

6. SPECIAL CONDITIONS

7. Visual Monitoring and Inspections

7.1. Inspections

All comprehensive site evaluations will include inspections where industrial materials and activities are exposed to stormwater and/or where spills or leaks occurred within the past three years and will identify:

- Industrial materials, residue or trash that could contaminate or be washed away in stormwater.
- Leaks or spills from industrial equipment, drums, barrels, tanks or similar containers.
- Unauthorized non-stormwater discharges or allowable non-stormwater discharges that are not certified.
- Off-site tracking of industrial materials or sediment where vehicles enter or exit the site.
- Tracking or blowing of raw, final or waste materials from areas of no exposure to exposed areas.

- Evidence of, or the potential for, pollutants entering the drainage system.

All inspections will include review and evaluation of BMPs to ensure that they are operating correctly, if any BMPs fail, such failure should be noted in the inspection report and corrective measures taken as necessary.

7.2. Corrective Actions

Corrective Action Report is attached as Appendix C.

8. RECORDKEEPING

8.1. Recordkeeping

9. CERTIFICATION

Owner

I certify under penalty of law that this document and all attachments were prepared under my direction or supervision in accordance with a system designed to assure that qualified personnel properly gathered and evaluated the information submitted. Based on my inquiry of the person or persons who manage the system, or those persons directly responsible for gathering the information, the information submitted is, to the best of my knowledge and belief, true, accurate, and complete. I am aware that there are significant penalties for submitting false information, including the possibility of fine and imprisonment for knowing violations.

Name: Dan Thomas

Title: Owner

Signature: *Dan Thomas*

Date: 3/31/25

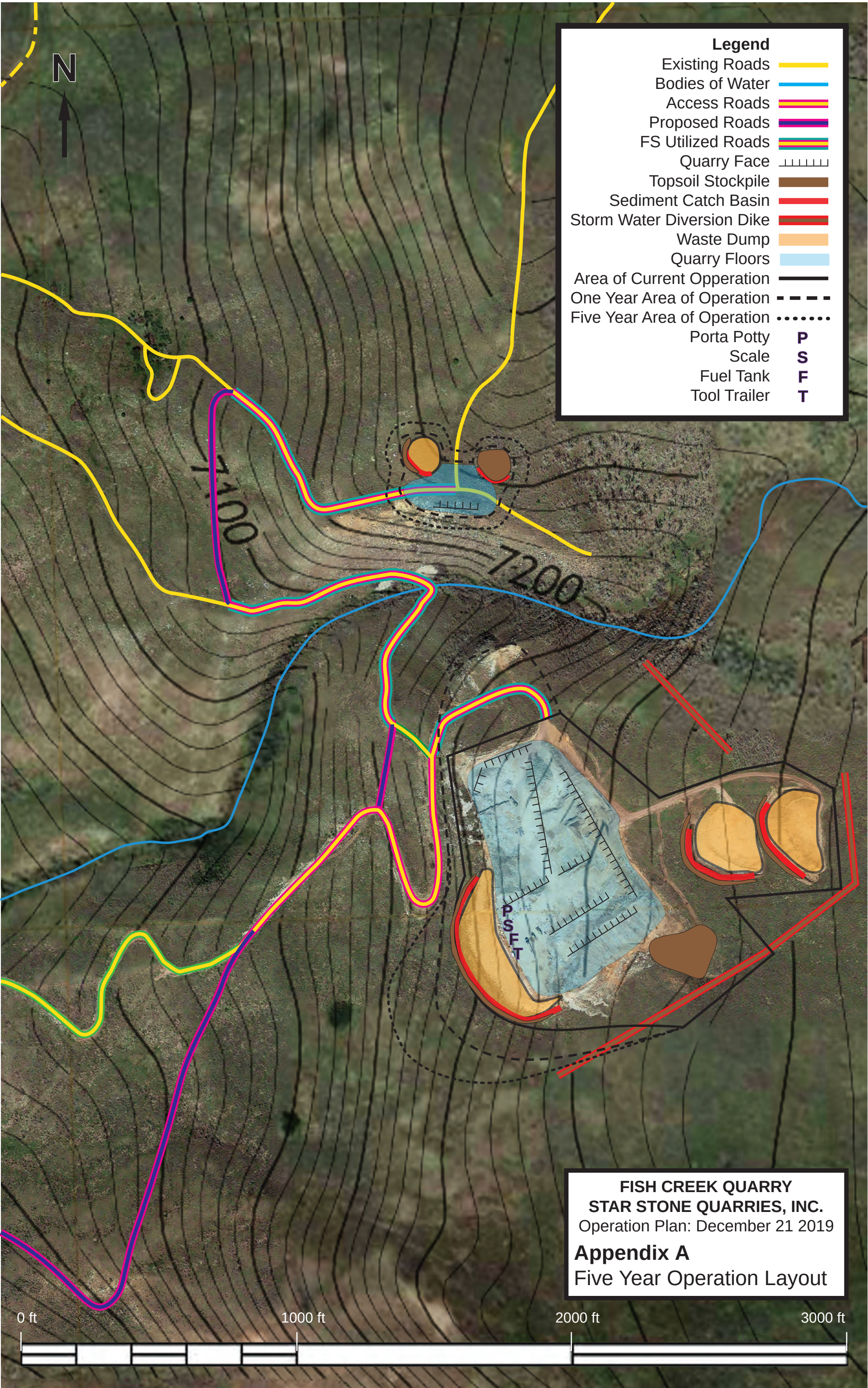
10. SWPPP APPENDICES

Appendix A – Site Map

Appendix B – Corrective Action Report

Appendix C – NOI

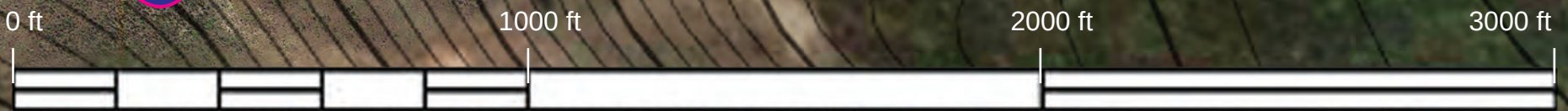
Appendix D – Inspection Report




Legend

- Existing Roads —
- Bodies of Water —
- Access Roads —
- Proposed Roads —
- FS Utilized Roads —
- Quarry Face
- Topsoil Stockpile
- Sediment Catch Basin
- Storm Water Diversion Dike
- Waste Dump
- Quarry Floors
- Area of Current Operation
- One Year Area of Operation
- Five Year Area of Operation
- Porta Potty **P**
- Scale **S**
- Fuel Tank **F**
- Tool Trailer **T**

FISH CREEK QUARRY
STAR STONE QUARRIES, INC.
 Operation Plan: December 21 2019
Appendix A
 Five Year Operation Layout



NPDES FORM 3510-6		UNITED STATES ENVIRONMENTAL PROTECTION AGENCY WASHINGTON, DC 20460 NOTICE OF INTENT (NOI) FOR STORMWATER DISCHARGES ASSOCIATED WITH INDUSTRIAL ACTIVITY UNDER THE NPDES MULTI-SECTOR GENERAL PERMIT	FORM Approved OMB No. 2040-0004 Expires on 07/31/2026
----------------------------------	---	--	--

This collection of information is approved by OMB under the Paperwork Reduction Act, 44 U.S.C. 3501 et seq. (OMB Control No. 2040-0004). Responses to this collection of information are mandatory in accordance with this permit and EPA NPDES regulations (40 CFR 122.28(b)(2)). An agency may not conduct or sponsor, and a person is not required to respond to, a collection of information unless it displays a currently valid OMB control number. The public reporting and recordkeeping burden for this collection of information are estimated to average 3.7 to 4.1 hours per response. Send comments on the Agency's need for this information, the accuracy of the provided burden estimates and any suggested methods for minimizing respondent burden to the Regulatory Support Division Director, U.S. Environmental Protection Agency (2821T), 1200 Pennsylvania Ave., NW, Washington, D.C. 20460. Include the OMB control number in any correspondence. Do not send the completed form to this address.

Permit Information

Master Permit Number: IDR050000

NPDES ID: IDR05J00J

Eligibility Information

State/territory where your facility is discharging: ID

Does your facility discharge to federally recognized Indian Country lands? No

Are you a "Federal Operator" as defined in Appendix A (https://www.epa.gov/sites/production/files/2021-01/documents/2021_msgp_-_appendix_a_-_definitions.pdf)?

No

Which type of form would you like to submit? Notice of Intent (NOI)

By indicating "Yes" below, I confirm that I understand that the MSGP only authorizes the stormwater discharges in Part 1.1.2 and the allowable non-stormwater discharges listed in Part 1.2.2. Any discharges not expressly authorized in this permit cannot become authorized or shielded from liability under CWA section 402(k) by disclosure to EPA, state, or local authorities after issuance of this permit via any means, including the Notice of Intent (NOI) to be covered by the permit, the Stormwater Pollution Prevention Plan (SWPPP), during an inspection, etc. If any discharges requiring NPDES permit coverage other than the allowable stormwater and non-stormwater discharges listed in Parts 1.2.1. and 1.2.2. will be discharged, they must be covered under another NPDES permit.

Yes

Are you a new discharger or a new source as defined in Appendix A (https://www.epa.gov/sites/production/files/2021-01/documents/2021_msgp_-_appendix_a_-_definitions.pdf)?

No

➤ **Have stormwater discharges from your facility been covered previously under an NPDES permit?** Yes

➤ **If yes, provide your most current NPDES ID (i.e., permit tracking number) if you had coverage under EPA's MSGP or the NPDES permit number if you had coverage under an EPA individual permit:**

IDR05J00J

➤

Latitude/Longitude for the Facility

Latitude/Longitude: 42.132545°N, 113.753863°W

Latitude/Longitude Data Source: Map

Horizontal Reference Datum: WGS 84

General Facility Information

What is the ownership type of the facility? Mixed Ownership (e.g. Public/Private)

Estimated area of industrial activity at your facility exposed to stormwater (rounded to the nearest quarter acre):

35

Is your facility presently inactive and unstaffed? No

Exception for Inactive and Unstaffed Facilities: The requirement for indicator monitoring, impaired waters monitoring, and/or benchmark monitoring does not apply at a facility that is inactive and unstaffed, as long as there are no industrial materials or activities exposed to stormwater.

If circumstances change during the permit term that affect your qualifications for this exception to monitoring requirements (i.e. industrial materials or activities exposure to stormwater or your facility's active/inactive and staffed/unstaffed status) you must submit a NOI notifying EPA of the change in circumstances.

Sector-Specific Information

Primary Sector: J

Primary Subsector: J2

Primary SIC Code: 1411

Discharge Information

By indicating "Yes" below, I confirm that I understand that the MSGP only authorizes the stormwater discharges in Part 1.2.1 and the allowable non-stormwater discharges listed in Part 1.2.2. Any discharges not expressly authorized in this permit cannot become authorized or shielded from liability under CWA section 402(k) by disclosure to EPA, state, or local authorities after issuance of this permit via any means, including the Notice of Intent (NOI) to be covered by the permit, the Stormwater Pollution Prevention Plan (SWPPP), during an inspection, etc. If any discharges requiring NPDES permit coverage other than the authorized stormwater and non-stormwater discharges listed in Parts 1.2.1 and 1.2.2 will be discharged, they must be covered under another NPDES permit.

Yes

Other Discharge Information

Does your facility discharge into a Municipal Separate Sewer System (MS4)? No

Receiving Waters Information

List all of the stormwater discharge points from your facility.

Discharge Point 001: Fish Creek

Applicable Sectors

Select the Sectors/Subsector(s) that apply to this discharge point.

	Sector	Subsector	SIC/Activity Code
<input checked="" type="checkbox"/>	J - MINERAL MINING AND DRESSING	J2 - Dimension Stone; Crushed and Broken Stone, Including Rip Rap; Nonmetallic Minerals Services, Except Fuels	1411

Federal Effluent Limitation Guidelines:

Identify the Effluent Limitation Guideline(s) that apply to your stormwater discharges.

40 CFR Part/Subpart	Eligible Discharges	Affected MSGP Sector	New Source Date	Applicability
Part 436, Subpart B, C or D	Mine dewatering discharges at crushed stone mines, construction sand and gravel mines, or industrial sand mines	J	N/A	Does your discharge point have any discharges subject to this effluent limitation guideline? <u>No</u>

Are you requesting permit coverage for any stormwater discharges subject to effluent limitation guidelines?

No

Latitude/Longitude: 42.132545°N, 113.753863°W

This discharge point is *Substantially Identical* to an existing discharge point.

Receiving Water

GNIS Name:

n/a

Waterbody Name:

Fish Creek

Listed Water ID:

n/a

Is this receiving water saltwater or freshwater? Freshwater

Is this receiving water designated by the state or tribal authority under its antidegradation policy as a Tier 2 (or Tier 2.5) water (water quality exceeds levels necessary to support propagation of fish, shellfish, and wildlife and recreation in and on the water)?

No

Will you have stormwater discharges from paved surfaces that will be initially sealed or re-sealed with coal-tar sealcoat where industrial activities are located during coverage under this permit?

No

Benchmark Monitoring

Are you subject to benchmark monitoring requirements for a hardness-dependent metal? No

Impaired Waters Monitoring

NOTE: The information automatically populated in this section may be outdated and inaccurate (i.e. determining if the receiving water is listed as impaired on the 303(d) list, the cause(s) of the impairment if impaired, the pollutant(s)). It is recommended that you consult with your state's guidance for discharges into impaired waters to determine whether the receiving water is listed as impaired and, if so, the correct causes for the impairment and pollutant(s), and update the information accordingly.

Is the receiving water listed as impaired on the 303(d) list and in need of a TMDL?

Has a TMDL been completed for this receiving waterbody? No

SWPPP Information

Has the SWPPP been prepared in advance of filing this NOI, as required? Yes

SWPPP Contact Information:

First Name Middle Initial Last Name: Dan Thomas

Phone: 801-747-7200 **Ext.:**

Email: dthomas@starstonesales.com

SWPPP Availability:

Your current SWPPP or certain information from your SWPPP must be made available through one of the following three options. Select one of the options and provide the required information.

Note: you are not required to post any confidential business information (CBI) or restricted information (as defined in Appendix A (https://www.epa.gov/sites/production/files/2021-01/documents/2021_msgp_-_appendix_a_-_definitions.pdf)) (such information may be redacted), but you must clearly identify those portions of the SWPPP that are being withheld from public access.

Option 1: Attach a current copy of your SWPPP to this NOI.

Option 2: Maintain a Current Copy of your SWPPP on an Internet page (Universal Resource Locator or URL).

Option 3: Provide the following information from your SWPPP:

A. Describe your onsite industrial activities exposed to stormwater and potential spill and leak areas.

e.g., material storage; equipment fueling, maintenance, and cleaning; cutting steel beams

Material storage, equipment fueling and loading

B. List the pollutant(s) or pollutant constituent(s) associated with each industrial activity exposed to stormwater that could be discharged in stormwater and/or in any authorized non-stormwater discharges listed in Part 1.1.3.

Materials that are stored on-site include: Oil, Hydraulic Oil, and Anti-Freeze. Materials are stored so as to minimize spillage when filling equipment.

C. Describe the control measures you will employ to comply with the non-numeric technology-based effluent limits required in Part 2.1.2 and Part 8, and any other measures taken to comply with the requirements in Part 2.2 Water Quality-Based Effluent Limitations (see Part 5.2.4).

In order to ensure the cleanliness, safety, and efficiency of this site Star Stone Quarries plans on the following:
Storing materials so as to minimize leakage
Using small jugs to transport oils for maintaining machines
Working to identify and repair machine leaks quickly
Performing daily cleanup of material storage area
Training employees in best practices techniques

D. Provide a schedule for good housekeeping and maintenance (see Part 5.2.5.1) and a schedule for all inspections required in Part 4 (see Part 5.2.5.2).

Daily Quarry Working face Inspection
Daily equipment inspection
Annual Employee Training and Re-certification

Endangered Species Protection Worksheet: Criterion A

The following questions will help you determine your eligibility under Part 1.1.4 of the permit with respect to protection of Endangered Species Act (ESA) species and critical habitat(s). Please refer to Appendix E (https://www.epa.gov/sites/production/files/2021-01/documents/2021_msgp_-_appendix_e_-_procedures_relating_to_endangered_species_protection.pdf) of the 2021 MSGP for important information regarding your obligations under this permit concerning ESA-protected species and critical habitat(s).

Determine ESA Eligibility Criterion

Are your industrial activities already addressed in another operator's valid certification of eligibility for your "action area" under eligibility criteria A, C, D, or E of the 2021 MSGP?

No

Are your industrial activities the subject of a permit under section 10 of the ESA by the USFWS and/or NMFS, and this authorization addresses the effects of your facility's discharges and discharge-related activities on ESA-listed species and critical habitat?

No

You must determine whether species listed as either threatened or endangered under the Endangered Species Act, and/or their critical habitat are located in your facility's action area. ESA-listed species and critical habitat are under the purview of the NMFS and the USFWS.

Determine Your Action Area

Your "action area" (as defined in Appendix A (https://www.epa.gov/sites/production/files/2021-01/documents/2021_msgp_-_appendix_a_-_definitions.pdf)) includes all areas to be affected directly or indirectly by the action and not merely the immediate area involved in the action, including areas beyond the footprint of the facility that are likely to be affected by stormwater discharges, discharge-related activities, and authorized non-stormwater discharges. You must select and confirm that all the following are true:

➤ In determining my "action area", I have considered that discharges of pollutants into downstream areas can expand the action area well beyond the footprint of my facility and the discharge point(s). I have taken into account the controls I will be implementing to minimize pollutants and the receiving waterbody characteristics (e.g. perennial, intermittent, ephemeral) in determining the extent of physical, chemical, and/or biotic effects of the discharges. I confirm that all receiving waterbodies that could receive pollutants from my facility are included in my action area.

True


➤ In determining my "action area", I have considered that discharge-related activities must also be accounted for in determining my action area. I understand that discharge-related activities are any activities that cause, contribute to, or result in stormwater and authorized non-stormwater point source discharges, and measures such as the siting, construction, and operation of stormwater controls to control, reduce, or prevent pollutants from being discharged. I understand that any new or modified stormwater controls that will have noise or other similar effects, and any disturbances associated with construction of controls, are part of my action area.

True

Provide a written description of your action area and explain your rationale for the extent of the action area drawn on your map. [Click here for an example.](#)

The action area for the Fish Creek Mine is limited to the limits of the mine as no stormwater is discharged from the facility to travel downstream.

Attach a map of the action area for your facility. Mapping tool IPaC (the Information, Planning, and Consultation System) located at <http://ecos.fws.gov/ipac/> (<https://ecos.fws.gov/ipac/>) or [click here \(/net-msgp/documents/action_area_example.pdf\)](#) for an example.

Name	Uploaded Date	Size
 Map #7 Five Year Layout V1arb.pdf (attachment/702938)	03/01/2021	264.22 KB

Determine if ESA-listed species and/or critical habitat are in your facility's action area.

ESA-listed species and critical habitat are under the purview of the NMFS and the USFWS, and in many cases, you will need to acquire species and critical habitat lists from both federal agencies.

National Marine Fisheries Service (NMFS)

To obtain NMFS-listed species and critical habitat information, use the resources listed below:

General Resources:

- NOAA Fisheries, Regions Page (<https://www.fisheries.noaa.gov/regions>) ⓘ

For the Northeastern U.S.:

- NOAA Fisheries Greater Atlantic Region ESA Section 7 Mapper (<https://noaa.maps.arcgis.com/apps/webappviewer/index.html?id=a85c0313b68b44e0927b51928271422a>)

For Puerto Rico:

- *Acropora* critical habitat map (<https://www.fisheries.noaa.gov/resource/map/acropora-elkhorn-and-staghorn-coral-critical-habitat-map-and-gis-data>)
- Green turtle critical habitat map (<https://www.fisheries.noaa.gov/resource/map/green-turtle-critical-habitat-map-and-gis-data>)
- Hawksbill Turtle critical habitat map (<https://www.fisheries.noaa.gov/resource/map/hawksbill-turtle-critical-habitat-map-and-gis-data>)

Western U.S.:

- West Coast Region Protected Resources App (<https://www.webapps.nwfsc.noaa.gov/portal/apps/webappviewer/index.html?id=7514c715b8594944a6e468dd25aaacc9>)

Pacific Islands:

- Contact the Pacific Islands Regional Office at (808) 725-5000 or pirohonolulu@noaa.gov (<mailto:pirohonolulu@noaa.gov>)

I have checked the webpages listed above and confirmed that:

There are no NMFS-listed species and/or critical habitat in my action area.

U.S. Fish and Wildlife Service (USFWS)

To obtain FWS-listed species and critical habitat information, use the resources listed below:

- IPaC (the Information, Planning, and Consultation System) (<https://ecos.fws.gov/ipac/>)
- For instructions for using IPaC, [click here](#).

I have checked the webpages listed above and confirmed that:


There are no FWS-listed species and/or critical habitat in my action area.

You are eligible under **Criterion A**

Identify the USFWS and NMFS information sources used (Note: state resources are not acceptable):

<https://ecos.fws.gov/ipac/>

You must attach copies of any letters or other communications with the USFWS or NMFS. Attaching aerial image(s) of the site to this NOI is helpful to EPA, USFWS, and NMFS in confirming eligibility under this criterion.

Name	Uploaded Date	Size
 FINAL Map #2 Existing and Proposed Roads.pdf (attachment/702939)	03/01/2021	636.23 KB

Historic Preservation: Criterion A

The following questions will help you determine your eligibility under Part 1.1.5 of the permit with respect to preservation of historic properties. You may still use the paper instructions in Appendix F (https://www.epa.gov/sites/production/files/2021-01/documents/2021_msgp_-_appendix_f_-_procedures_relating_to_historic_properties_preservation.pdf) of the MSGP in advance or in conjunction with answering the questions in this section of the form. For more information about your State Historic Preservation Office (SHPO) or Tribal Historic Preservation Office (THPO), please visit the National Park Service (NPS) websites at:

- State Historic Preservation Office (SHPO) (<https://www.nps.gov/subjects/nationalregister/state-historic-preservation-offices.htm>)
- Tribal Historic Preservation Office (THPO) (<https://www.nps.gov/subjects/historicpreservationfund/tribal-historic-preservation-office-program.htm>)

Are you an existing facility that is resubmitting for certification under the 2021 MSGP? Yes

➔ If you are an existing facility you should have already addressed National Historic Preservation Act (NHPA) issues. To gain coverage under the 2015 MSGP, you were required to certify that you were either not affecting historic properties or had obtained written agreement from the relevant SHPO or THPO regarding methods of mitigating potential impacts.

Will you be constructing or installing any new stormwater control measures? No

You are eligible under **Criterion A**.

Additional Supporting Information

Use this section to provide additional information you feel is pertinent to your coverage or to provide information in a Change NOI for a numeric effluent limitation exceedence as required in part 4.2.3.3. of the permit.

Do you have supporting information you would like to add? No

Certification Information

I certify under penalty of law that this document and all attachments were prepared under my direction or supervision in accordance with a system designed to assure that qualified personnel properly gathered and evaluated the information submitted. Based on my inquiry of the person or persons who manage the system, or those persons directly responsible for gathering the information, the information submitted is, to the best of my knowledge and belief, true, accurate, and complete. I have no personal knowledge that the information submitted is other than true, accurate, and complete. I am aware that there are significant penalties for submitting false information, including the possibility of fine and imprisonment for knowing violations. Signing an electronic document on behalf of another person is subject to criminal, civil, administrative, or other lawful action.

Certified By: Dan Thomas

Certifier Title: VP

Certifier Email: dthomas@starstonesales.com

Certified On: 03/01/2021 6:07 PM ET

Quarry Name: Fish Creek
Quarry and/or Yard Checklist

Month / Year 11/2024

DAY:	1	2	3	4	5	6	7	8	9	10	11	12	13	14	15	16	17	18	19	20	21	22	23	24	25	26	27	28	29	30	31
LOADER:																															
Tires	X			X	X	X	X	X			X	X	X	X	X																
Brakes	X			X	X	X	X	X			X	X	X	X	X																
Oil- Engine & Hydraulic	X			X	X	X	X	X			X	X	X	X	X																
Leaks-Oil, Air, Water, Fuel	X			X	X	X	X	X			X	X	X	X	X																
Back-up Alarm	X			X	X	X	X	X			X	X	X	X	X																
Fire Extinguisher- charged	X			X	X	X	X	X			X	X	X	X	X																
TRACK HOE:																															
Oil- Engine & Hydraulic	X			X	X	X	X	X			X	X	X	X	X																
Fire Extinguisher- charged	X			X	X	X	X	X			X	X	X	X	X																
TRACK DRILL:																															
Tires																															
Track																															
Oil																															
Fire Extinguisher- charged																															
FORK LIFT:																															
Tires																															
Brakes																															
Oil- Engine & Hydraulic																															
Back-up Alarm																															
Fire Extinguisher- charged																															
EXCAVATOR:																															
Tires Tracks	X			X	X	X	X	X			X	X	X	X	X																
Brakes	X			X	X	X	X	X			X	X	X	X	X																
Oil- Engine & Hydraulic	X			X	X	X	X	X			X	X	X	X	X																
Back-up Alarm	X			X	X	X	X	X			X	X	X	X	X																
FUEL STORAGE:																															
Leaks	X			X	X	X	X	X			X	X	X	X	X																
Fire extinguisher- charged	X			X	X	X	X	X			X	X	X	X	X																
OFFICE:																															
First Aid																															
Fire Extinguisher - charged																															
QUARRY CONDITION:																															
D=Dry M=Muddy S=Snow	D			D	D	D	D	D			D	D	D	D	D																
YARD CONDITION:																															
D=Dry M=Muddy S=Snow																															

Start Down

N A

N A

Snow

Quarry Name: Fish Creek
Quarry and/or Yard Checklist

Month / Year 10-2024

DAY:	1	2	3	4	5	6	7	8	9	10	11	12	13	14	15	16	17	18	19	20	21	22	23	24	25	26	27	28	29	30	31	
LOADER:																																
Tires	/	/	/	/	/	/	/	/	/	/	/	/	/	X	X	X	X	X			X	X	X	X	X			/	/	/	/	
Brakes	/	/	/	/	/	/	/	/	/	/	/	/	/	X	X	X	X	X			X	X	X	X	X			/	/	/	/	
Oil- Engine & Hydraulic	/	/	/	/	/	/	/	/	/	/	/	/	/	X	X	X	X	X			X	X	X	X	X			/	/	/	/	
Leaks-Oil, Air, Water, Fuel	/	/	/	/	/	/	/	/	/	/	/	/	/	X	X	X	X	X			X	X	X	X	X			/	/	/	/	
Back-up Alarm	/	/	/	/	/	/	/	/	/	/	/	/	/	X	X	X	X	X			X	X	X	X	X			/	/	/	/	
Fire Extinguisher- charged	/	/	/	/	/	/	/	/	/	/	/	/	/	X	X	X	X	X			X	X	X	X	X			/	/	/	/	
TRACK HOE:																																
Oil- Engine & Hydraulic																																
Fire Extinguisher- charged																																
TRACK DRILL:																																
Tires																																
Track																																
Oil																																
Fire Extinguisher- charged																																
FORK LIFT:																																
Tires																																
Brakes																																
Oil- Engine & Hydraulic																																
Back-up Alarm																																
Fire Extinguisher- charged																																
EXCAVATOR:																																
Tires																																
Brakes																																
Oil- Engine & Hydraulic																																
Back-up Alarm																																
FUEL STORAGE:																																
Leaks																																
Fire extinguisher- charged																																
OFFICE:																																
First Aid																																
Fire Extinguisher - charged																																
QUARRY CONDITION:																																
D=Dry M=Muddy S=Snow	D	D	D	D			D	M	D	D	D			D	D	D	D	P			D	D	D	D	D			D	D	D	D	
YARD CONDITION:																																
D=Dry M= Muddy S=Snow																																

Handwritten scribbles and "N/A" written across the TRACK HOE and TRACK DRILL sections.