

2024 Price List

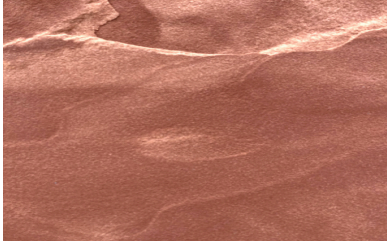




DEALER PRICE LIST

Effective Date: March 15, 2024

SANDSTONE



CHEROKEE RED

Deep red to brick red with salmon accents – this high integrity sandstone is smooth, flat, and very durable. Weather and frost resistant, with a non-slip texture makes Cherokee a good choice for any condition.

Grade	Thickness	f.o.b. Heber City, UT	Approx Coverage/ton
PATIO	1" minus (Vertical)	\$200/ton	200 Sq. ft.
Face sizes range from ¾ - 4 Sq. ft.	2" minus	\$170	100
	3" minus	\$120	70
WATERWASHED PATIO	2" minus	\$230	100
Face sizes range from ¾ - 4 Sq. ft.	3" minus	\$180	70
DRystack			
Face sizes range from ¾ - 4 Sq. ft.	3 - 6"	\$120	15
SELECT	2" (Vertical)	\$330	90
Face sizes range from 3 - 12 Sq. ft.	4" minus (Supers)	\$220	45
SQUARES AND RECS			
Random sizes	3 - 5"	\$240	45
GUILLOTINE	2 - 4"	\$240	45
Bed depth: 4" Length 6" plus	4 - 8"	\$240	45
NATURAL STRIP LEDGE			
Bed depth: 3 - 8" Length 8 to 24"	2 - 5"	\$140	35
NATURAL STEPS	4 - 6"	\$140	N/A
Random widths/lengths	6 - 8"	\$140	N/A
	8 - 10"	\$140	N/A
NATURAL COLUMNS			
3 - 7' Long	6 - 20" Diameter	420	N/A
LANDSCAPE SLABS			
8 plus Sq. ft.	8 - 18"	\$120	N/A
SAW BLOCK			
9 plus Sq. ft.	12" plus	\$160	N/A

CONTINUES

CHEROKEE RED CONTINUED

Grade	Thickness	f.o.b. Heber City, UT	Approx Coverage/ton
BOULDERS			
Bulk	2 - 3'	\$40	N/A
	3 - 6'	\$40	N/A
Palletized	1 - 2'	\$90	N/A
RUBBLE			
Palletized	5 - 12'	\$90	N/A
DECORATIVE AGGREGATE			
Bulk	1" minus	\$50	100 Sq. ft.
	2" minus	\$50	100
	3" minus	\$40	70
Super Sacked +\$35/ton			N/A

ALSO AVAILABLE

f.o.b.. Salt Lake City, UT +\$35/ton
f.o.b. Moulton, ID +\$45

f.o.b. Oakley, ID +\$60
f.o.b. Vancouver, WA +\$100

GUILLOTINE STEPS

18' x 2 - 3'	4 - 6"	\$55/ea	N/A
	6 - 8"	\$65	N/A
18" x 3 - 4'	4 - 6"	\$95	N/A
	6 - 8"	\$105	N/A
18" 4 - 6'	4 - 6"	\$135	N/A
	6 - 8"	\$150	N/A

ALSO AVAILABLE

f.o.b.. Salt Lake City, UT +\$35/ea
f.o.b. Moulton, ID +\$45

f.o.b. Oakley, ID +\$60
f.o.b. Vancouver, WA +\$100

GARDEN STONE

2" minus Patio	1,000 lbs/pallet	\$120/ea	50 Sq. ft.
	2,000 lbs	\$210	100

ALSO AVAILABLE

Garden Stone, 1,000 lbs

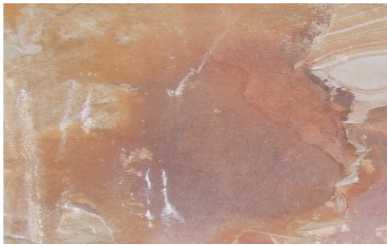
f.o.b. Salt Lake City, UT +\$17.50/ea
f.o.b. Vancouver, WA +\$50

Garden Stone, 2,000 lbs

f.o.b. Salt Lake City, UT +\$35/ea
f.o.b. Vancouver, WA +\$100

STONE BENCHES

		f.o.b. SLC, UT	f.o.b. VC, WA	f.o.b. ID Locations
Tops 18" wide x 4" thick—Legs 6 - 8" wide x 15" tall x 18" deep, all pieces sawn 4 sides	3-Foot	\$210.00/ea	\$ + \$25	\$ + \$10
	4-Foot	\$250.00	\$ + \$25	\$ + \$10



SUNRISE

Blonde sandstone with concentric veining of gold, rose and lavender giving the appearance of a rising sun. This durable stone is highly versatile for a wide variety of applications. Weather and frost resistant, smooth flat surfaces and high strength make Sunrise a good choice for any condition.

Grade	Thickness	f.o.b. Heber City, UT	Approx Coverage/ton
PATIO	1 ¼ - 2"	\$290/ton	100 Sq. ft.
Face sizes range from ¾ - 4 Sq. ft.	2 - 2 ½"	\$235	65
WATERWASHED PATIO			
Face sizes range from ¾ - 4 Sq. ft.	2"	\$350	65
SELECT	1 ¼ - 2" (Vertical)	\$470	90
Face sizes range from 3 - 12 Sq. ft.	2 - 3" (Supers)	\$360	65
DRystack			
Face sizes range from ¾ - 4 Sq. ft.	4 - 6"	\$170	15
GUILLOTINE	2 - 4"	\$300	40
Bed depth: 4" Length: 6" plus	4 - 8"	\$300	40
SQUARES AND REC'S			
Random Sizes	3 - 4"	\$300	40
BOULDERS	1 - 6'	\$195	N/A
Palletized	2 - 3'	\$85	N/A
	3 - 6'	\$85	N/A
Bulk	1 - 2'	\$85	N/A

ALSO AVAILABLE

f.o.b. Salt Lake City, UT +\$20/ton
f.o.b. Moulton, ID +\$45

f.o.b. Oakley, ID +\$60
f.o.b. Vancouver, WA +\$100

GARDEN STONE

2" minus Patio	1,000 lbs/pallet	\$180/ea	50 Sq. ft.
	2,000 lbs	\$330	100

ALSO AVAILABLE

Garden Stone, 1,000 lbs

f.o.b. Salt Lake City, UT +\$10/ea
f.o.b. Vancouver, WA +\$50

Garden Stone, 2,000 lbs

f.o.b. Salt Lake City, UT +\$20/ea
f.o.b. Vancouver, WA +\$100

STONE BENCHES

		f.o.b. SLC, UT	f.o.b. VC, WA	f.o.b. ID Locations
Tops 18" wide x 4" thick—Legs 6 - 8" wide x 15" tall x 18" deep, all pieces sawn 4 sides	3-Foot	\$230.00	\$ + \$25	\$ + \$10
	4-Foot	\$275.00	\$ + \$25	\$ + \$10



NORTH RIVER BLUESTONE

Hard, fine-grained sandstone, prized for its deep blue hue.

Grade	Thickness	f.o.b. Salt Lake City, UT	Approx Coverage/ton
PATIO			
Face sizes range from ¾ - 4 Sq. ft.	2" minus	\$540/ton	100 Sq. ft.
SELECT			
Face sizes range from 3 - 12 Sq. ft.	1" (Vertical)	\$540	180
	2" minus (Vertical)	\$540	90

ALSO AVAILABLE

f.o.b. Heber City, UT +\$35/ton
f.o.b. Moulton, ID +\$45

f.o.b. Oakley, ID +\$60
f.o.b. Vancouver, WA +\$60

PATTERN FULL COLOR

Mixed sizes 12 x 12 inches
to 24 x 36"

¾ - 1 ¼"

\$7.50/Sq. ft.

N/A

ALSO AVAILABLE

f.o.b. Heber City, UT +\$0.20/Sq. ft.
f.o.b. Moulton, ID +\$0.25

f.o.b. Oakley, ID +\$0.30
f.o.b. Vancouver, WA +\$0.40

PATTERN FULL COLOR

Mixed sizes 12 x 12 inches
to 24 x 36"

1 ¼" - 2 ¼"

\$9.00

N/A

ALSO AVAILABLE

f.o.b. Heber City, UT +\$0.40/Sq. ft.
f.o.b. Moulton, ID +\$0.50

f.o.b. Oakley, ID +\$0.60
f.o.b. Vancouver, WA +\$0.80



CHESTNUT

Buff to dark brown sandstone. Smooth, flat and durable.
Weather and frost resistant.

Grade	Thickness	f.o.b. Salt Lake City, UT	Approx Coverage/ton
PATIO			
Face sizes range from ¾ - 4 Sq. ft.	1" minus (Vertical)	\$430/ton	200 Sq. ft.
	2" minus	\$400	100
SELECT			
Face sizes range from 4 - 12 Sq. ft.	2" minus (Vertical)	\$560	90
GUILLOTINE			
Bed depth: 4" Length: 6" plus	3 - 5"	\$430	45
SLABS			
	3" minus	\$470	60



BLUE HERON

With subtle waves of mica, feldspar, quartz, and sandstone, Blue Heron provides a flawless combination of texture, strength, and versatility to create an ideal complement to any rustic or modern aesthetic.

Grade	Thickness	f.o.b. Salt Lake City, UT	Approx Coverage/ton
PATIO			
¾ - 4 Sq. ft.	2"	\$555/ton	100 Sq. ft.
SELECT			
3 - 12 Sq. ft.	2 - 2 ½"	\$535	80



RUSTIC HERON

Beams are used to create dynamic retaining walls, steps, or innovative landscape features valued for their slip resistance, high strength, and stability.

Grade	Thickness	f.o.b. Salt Lake City, UT	Approx Coverage/ton
BEAM ROCK			
12 to 36" wide 3 to 12" long	9"	\$435/ton	N/A

THIS PAGE ALSO AVAILABLE

f.o.b. Heber City, UT +\$35
f.o.b. Moulton, ID +\$45

f.o.b. Oakley, ID +\$60
f.o.b. Vancouver, WA +\$45

QUARTZITE



AUTUMN GOLD

Gold with streaks of dark gold and gray on a silver white background. Very hard, flat and smooth with minor shiny micas on the split surface.

Grade	Thickness	f.o.b. Moulton, ID	Approx Coverage/ton
DECORATIVE			
$\frac{3}{4}$ Sq. ft. minus	$\frac{1}{2}$ - 1"	\$130/ton	200 Sq. ft.
PATIO			
Faces range from $\frac{3}{4}$ - 4 Sq. ft.	1" minus (Vertical)	\$290	200
	2" minus	\$230	100
	3" minus	\$120	80
WATERWASHED MINI COBBLES			
$\frac{3}{4}$ Sq. ft. minus	1 - 3"	\$150	80
WATERWASHED PATIO			
Faces range from $\frac{3}{4}$ - 4 Sq. ft.	2" minus	\$290	100
	3" minus	\$180	80
DRystack			
Faces range from $\frac{3}{4}$ - 4 Sq. ft.	3 - 6"	\$100	15
SELECT			
Face range from 3 - 12 Sq. ft.	1" minus (Vertical)	\$520	200
	2" minus (Vertical)	\$330	100
	3" minus	\$290	80
NATURAL STRIP LEDGE			
Bed depth 3 - 5" Length 8 - 24"	3 - 6"	\$180	35
WATERWASHED NATURAL STRIP			
Bed depth 3 - 5" Length 8 - 24"	3 - 6"	\$240	35
RUBBLE			
Palletized	5 - 12"	\$90	N/A
BOULDERS			
Bulk	1 - 6'	\$70	N/A
Palletized	1 - 6'	\$140	N/A
NATURAL STEPS			
Random widths and lengths	3 - 5"	\$210	N/A
	5 - 8"	\$210	N/A

CONTINUES

AUTUMN GOLD CONTINUED

Grade	Thickness	f.o.b. Moulton, ID	Approx Coverage/ton
-------	-----------	--------------------	---------------------

LANDSCAPE SLABS

8 plus Sq. ft.	8 - 18"	\$140/ton	N/A
----------------	---------	-----------	-----

ALSO AVAILABLE

f.o.b. Salt Lake City, UT +\$45/ton	f.o.b. Oakley, ID +\$15
f.o.b. Heber City, UT +\$45	f.o.b. Vancouver, WA +\$80

GARDEN STONE

2" Patio	1,000 lbs/pallet	\$177.50/ea	50 Sq. ft.
	2,000 lbs	\$285	100

ALSO AVAILABLE

Garden Stone, 1,000 lbs	f.o.b. Salt Lake City, UT +\$22.50/ea
	f.o.b. Oakley, ID +\$7.50
	f.o.b. Vancouver, WA +\$40
Garden Stone, 2,000 lbs	f.o.b. Salt Lake City, UT +\$45/ea
	f.o.b. Oakley, ID +\$15
	f.o.b. Vancouver, WA +\$80
	f.o.b. Oakley, ID

STONE BENCHES

Tops 18" wide x 4" thick—Legs 6 - 8" wide x 15" tall x 18" deep, all pieces sawn 4 sides	3-Foot	\$235.00/ea
	4-Foot	\$285.00

ALSO AVAILABLE

f.o.b. Salt Lake City, UT +\$10	f.o.b. Moulton, ID +\$5
	f.o.b. Vancouver, WA +\$20



FISH CREEK BROWN

Subdued beige ID quartzite.

Grade	Thickness	f.o.b. Moulton, ID	Approx Coverage/ton
-------	-----------	--------------------	---------------------

PATIO

	1" minus (Vertical)	\$290/ton	200 Sq. ft.
Faces range from ¾ - 4 Sq. ft.	2" minus	\$230	100
	3" minus	\$120	80

CONTINUES

FISH CREEK BROWN CONTINUED

Grade	Thickness	f.o.b. Salt Lake City, UT	Approx Coverage/ton
SELECT			
Face range from 3 - 12 Sq. ft.	1" minus (Vertical)	\$520/ton	
	2" minus (Vertical)	\$330	
	3" minus	\$290	80 Sq. ft.

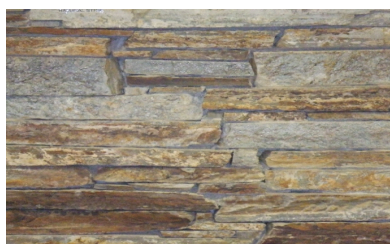
NATURAL STRIP LEDGE

Bed depth 3 - 5" Length 8 - 24"	3 - 6"	\$180	35
---------------------------------	--------	-------	----

ALSO AVAILABLE

f.o.b. Salt Lake City, UT +\$45/ton
f.o.b. Heber City, UT +\$45

f.o.b. Oakley, ID +\$15
f.o.b. Vancouver, WA +\$80



BAKER GOLD

Gray and gold naturally fractured, rectangular and very hard quartzite with gold and brown edges.

Grade	Thickness	f.o.b. Baker, NV	Approx Coverage/ton
PATIO			
Faces range from ¾ - 4 Sq. ft.	1" minus	\$300/ton	200 Sq. ft.
	2" minus	\$240	100

SQUARES AND REC'S

Random Sizes	2 - 4"	\$240	45
--------------	--------	-------	----

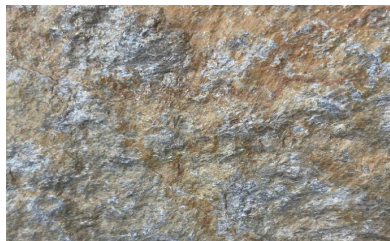
NATURAL STRIP LEDGE

Bed depth 3 - 5" Length 8 - 24"	3 - 6"	\$180	35
---------------------------------	--------	-------	----

ALSO AVAILABLE

f.o.b. Moulton, ID +\$100/ton
f.o.b. Salt Lake City, UT +\$60

f.o.b. Oakley, ID +\$115
f.o.b. Vancouver, WA +\$160



BUCKSKIN

Brown, gold and light gray with hues of soft blue for a deep bronze appearance.

Grade	Thickness	f.o.b. Moulton, ID	Approx Coverage/ton
DECORATIVE			
¾ Sq. ft. minus	½ - 1"	\$130/ton	200 Sq. ft.

CONTINUES

BUCKSKIN CONTINUED

Grade	Thickness	f.o.b. Moulton, ID	Approx Coverage/ton
PATIO			
<i>Faces range from ¾ - 4 Sq. ft.</i>	1" minus (Vertical)	\$290/ton	200 Sq. ft.
	2" minus	\$230	100
	3" minus	\$120	80
WATERWASHED PATIO			
<i>Faces range from ¾ - 4 Sq. ft.</i>	2" minus	\$290	100
	3" minus	\$180	80
DRystack			
<i>Faces range from ¾ - 4 Sq. ft.</i>	3 - 6"	\$100	15
SELECT			
<i>Face range from 3 to 12 Sq. ft.</i>	1" minus (Vertical)	\$520	200
	2" minus (Vertical)	\$330	100
	3" minus	\$290	80
NATURAL STRIP LEDGE			
<i>Bed depth 3 - 5" Length 8 - 24"</i>	3 - 6"	\$180	35
RUBBLE			
<i>Palletized</i>	5 - 12"	\$90	N/A
BOULDERS			
<i>Bulk</i>	1 - 6'	\$70	N/A
<i>Palletized</i>	1 - 6'	\$140	N/A
NATURAL STEPS			
<i>Random widths and lengths</i>	3 - 5"	\$210	N/A
	5 - 8"	\$210	N/A
LANDSCAPE SLABS			
<i>8 plus Sq. ft.</i>	8 - 18"	\$140	N/A
ALSO AVAILABLE			
<i>f.o.b. Salt Lake City, UT +\$45/ton</i>		<i>f.o.b. Oakley, ID +\$15</i>	
<i>f.o.b. Heber City, UT +\$45</i>		<i>f.o.b. Vancouver, WA +\$80</i>	
GARDEN STONE			
<i>2" Patio</i>	1,000 lbs/pallet	\$177.50/ea	50 Sq. ft.
	2,000 lbs	\$285	100
ALSO AVAILABLE			
<i>Garden Stone, 1,000 lbs</i>		<i>f.o.b. Salt Lake City, UT +\$22.50/ea</i>	
		<i>f.o.b. Oakley, ID +\$7.50</i>	
		<i>f.o.b. Vancouver, WA +\$17.50</i>	
<i>Garden Stone, 2,000 lbs</i>		<i>f.o.b. Salt Lake City, UT +\$45/ea</i>	
		<i>f.o.b. Oakley, ID +\$15</i>	
		<i>f.o.b. Vancouver, WA +\$35</i>	



STORM MOUNTAIN

A light to dark gray quartzite with accents of golden brown veining. Very durable smooth, flat and hard stone for veneer or patios. Storm Mountain is one of the highest quality quartzites available anywhere.

Grade	Thickness	f.o.b. Moulton, ID	Approx Coverage/ton
DECORATIVE			
<i>¾ Sq. ft. minus</i>	<i>½ - 1"</i>	<i>\$130/ton</i>	<i>200 Sq. ft.</i>
PATIO			
<i>Faces range from ¾ - 4 Sq. ft.</i>	<i>1" minus (Vertical)</i>	<i>\$290</i>	<i>200</i>
	<i>2" minus</i>	<i>\$230</i>	<i>100</i>
	<i>3" minus</i>	<i>\$120</i>	<i>80</i>
WATERWASHED MINI COBBLES			
<i>¾ Sq. ft. minus</i>	<i>1 - 3"</i>	<i>\$150</i>	<i>80</i>
WATERWASHED PATIO			
<i>Faces range from ¾ - 4 Sq. ft.</i>	<i>2" minus</i>	<i>\$290</i>	<i>100</i>
	<i>3" minus</i>	<i>\$180</i>	<i>80</i>
DRystack			
<i>Faces range from ¾ - 4 Sq. ft.</i>	<i>3 - 6"</i>	<i>\$100</i>	<i>15</i>
SELECT			
<i>Face range from 3 - 12 Sq. ft.</i>	<i>1" minus (Vertical)</i>	<i>\$520</i>	<i>200</i>
	<i>2" minus (Vertical)</i>	<i>\$330</i>	<i>100</i>
	<i>3" minus</i>	<i>\$290</i>	<i>80</i>
NATURAL STRIP LEDGE			
<i>Bed depth 3 - 5" Length 8 - 24"</i>	<i>3 - 6"</i>	<i>\$180</i>	<i>35</i>

CONTINUES

STORM MOUNTAIN CONTINUED

Grade	Thickness	f.o.b. Moulton, ID	Approx Coverage/ton
WATERWASHED NATURAL STRIP			
Bed depth 3 - 5" Length 8 - 24"	3 - 6"	\$240/ton	35 Sq. ft.
RUBBLE			
	5 - 12"	\$90	N/A
BOULDERS			
Bulk	1 - 6'	\$70	N/A
Palletized	1 - 6'	\$140	N/A
NATURAL STEPS			
Random widths and lengths	3 - 5"	\$210	N/A
	5 - 8"	\$210	N/A
LANDSCAPE SLABS			
8 plus Sq. ft.	8 - 18"	\$140	N/A
DECORATIVE AGGREGATE QUARTZITE BLEND			
5/8" minus		\$50	100
2" minus		\$50	100
Super Sacked +\$35/ton			N/A
ALSO AVAILABLE			
f.o.b. Salt Lake City, UT +\$45/ton		f.o.b. Oakley, ID +\$15	
f.o.b. Heber City, UT +\$45		f.o.b. Vancouver, WA +\$80	
GARDEN STONE			
2" Patio	1,000 lbs/pallet	\$177.50/ea	50 Sq. ft.
	2,000 lbs	\$285	100
Garden Stone, 1,000 lbs		f.o.b. Salt Lake City, UT +\$22.50/ea	
		f.o.b. Oakley, ID +\$7.50	
		f.o.b. Vancouver, WA +\$40	
Garden Stone, 2,000 lbs		f.o.b. Salt Lake City, UT +\$45/ea	
		f.o.b. Oakley, ID +\$15	
		f.o.b. Vancouver, WA +\$80	

STORM MOUNTAIN CONTINUED

Grade	Thickness	f.o.b. Oakley, ID	Approx Coverage/ton
GUILLOTINE LEDGE			
6 - 18" Lengths, 3 - 5" bed depth	2 - 4"	\$220/ton	35 Sq. ft.
	4 - 8"	\$220	35

ALSO AVAILABLE

f.o.b. Salt Lake City, UT +\$45/ton
f.o.b. Heber City, UT +\$45

f.o.b. Moulton, ID +\$15
f.o.b. Vancouver, WA +\$80

STONE BENCHES

Tops 18" wide x 4" thick—Legs 6 - 8" wide x 15" tall x 18" deep, all pieces sawn 4 sides

f.o.b. Salt Lake City, UT +\$10

3-Foot \$235.00/ea
4-Foot \$285.00

f.o.b. Moulton, ID +\$5
f.o.b. Vancouver, WA +\$20



WINDRIDGE

A weathered rich dark brown quartzite with a wide array of lighter colors including rust, copper and tan. This product is formed over thousands of years of natural exposure to the elements. Very durable flat and hard stone for veneer or patios.

Grade	Thickness	f.o.b. Moulton, ID	Approx Coverage/ton
DECORATIVE			
$\frac{3}{4}$ Sq. ft. minus	$\frac{1}{2}$ - 1"	\$130/ton	200 Sq. ft.
PATIO			
Faces range from $\frac{3}{4}$ - 4 Sq. ft.	1" minus (Vertical)	\$310	200
	2" minus	\$260	100
	4" minus	\$150	60
SELECT			
Face range from 3 to 12 Sq. ft.	1" minus (Vertical)	\$520	200
	2" minus (Vertical)	\$360	100
	3" minus	\$320	80
NATURAL STRIP LEDGE			
Bed depth 3 - 5" Length 8 - 24"	3 - 6"	\$210	35
RUBBLE			
Palletized	5 - 12"	\$100	N/A
BOULDERS			
Bulk	1 - 6'	\$90	N/A
Palletized	1 - 6'	\$180	N/A
LANDSCAPE SLABS			
8 plus Sq. ft.	8 - 18"	\$140	N/A

ALSO AVAILABLE

f.o.b. Salt Lake City, UT +\$45/ton
f.o.b. Heber City, UT +\$45

f.o.b. Oakley, ID +\$15
f.o.b. Vancouver, WA +\$80

GRANITE



MOUNTAIN ASH

Dark gray fine-grained granite with bronze streaks makes this stone perfect for veneer, fireplaces, dry stack walls and a variety of landscape uses.

Grade	Thickness	f.o.b. Moulton, ID	Approx Coverage/ton
DECORATIVE			
$\frac{3}{4}$ Sq. ft. minus	$\frac{1}{2}$ - 1"	\$90/ton	200 Sq. ft.
VENEER/PATIO			
	1 - 3"	\$120	40
Faces range from $\frac{3}{4}$ - 4 Sq. ft.	3 - 5"	\$200	40
	5 - 8"	\$175	25
SQUARE SHOULDERED			
Faces range from $\frac{3}{4}$ - 4 Sq. ft.	3 - 5"	\$230	40
WATERWASHED VENEER			
Faces range from $\frac{3}{4}$ - 4 Sq. ft.	3 - 5"	\$260	40
BLOCKY DRYSTACK			
Bed depth 6 - 14" Length 8 - 24"	5 - 10"	\$220	15
SELECT			
Face range from 4 - 15 Sq. ft.	3 - 5"	\$275	40
	5 - 8"	\$265	25
RUBBLE			
Palletized	5 - 12"	\$105	N/A
BOULDERS			
Bulk	1 - 6'	\$100	N/A
Palletized	1 - 6'	\$180	N/A
DECORATIVE AGGREGATE			
$\frac{5}{8}$ " minus		\$50	100
2" minus		\$50	100
Super Sacked +\$35/ton			N/A

ALSO AVAILABLE

f.o.b. Salt Lake City, UT +\$45/ton
f.o.b. Heber City, UT +\$45

f.o.b. Oakley, ID +\$15
f.o.b. Vancouver, WA +\$80

CONTINUES

MOUNTAIN ASH CONTINUED

Grade	Thickness	f.o.b. Oakley, ID	Approx Coverage/ton
GUILLOTINE LEDGE			
6 - 18" Lengths, 3 - 5" bed depth	3 - 6"	\$315/ton	35 Sq. ft.
SQUARES AND REC'S			
4 - 14" in height and length	3 - 5"	\$360	40
ALSO AVAILABLE			
f.o.b. Salt Lake City, UT +\$45/ton		f.o.b. Moulton ID +\$15	
f.o.b. Heber City, UT +\$45		f.o.b. Vancouver, WA +\$80	

SEASALT BLUE

Grade	Thickness	f.o.b. Moulton, ID	Approx Coverage/ton
VENEER/PATIO			
	1 - 3"	\$120/ton	40 Sq. ft.
Faces range from 3/4 - 4 Sq. ft.	3 - 5"	\$200	40
	5 - 8"	\$175	25
SQUARE SHOULDERED			
Faces range from 3/4 - 4 Sq. ft.	3 - 5"	\$230	40
BOULDERS			
Bulk	1 - 6'	\$100	N/A
Palletized	1 - 6'	\$180	N/A
DECORATIVE AGGREGATE			
5/8" minus		\$50	100
2" minus		\$50	100
Super Sacked +\$35/ton			N/A

CRYSTAL WHITE

Grade	Thickness	f.o.b. Moulton, ID	Approx Coverage/ton
BOULDERS			
Bulk	1 - 6'	\$125/ton	N/A
Palletized	1 - 6'	\$180	N/A
ALSO AVAILABLE			
f.o.b. Salt Lake City, UT +\$45/ton		f.o.b. Oakley, ID +\$15	
f.o.b. Heber City, UT +\$45		f.o.b. Vancouver, WA +\$80	

OTHER STONE

HONEY & CORAL ONYX

Light honey and coral tones.

Grade	Thickness	f.o.b. Salt Lake City, UT	Approx Coverage/ton
RUBBLE			
<i>Palletized</i>	<i>5 to 12 inches</i>	<i>\$110/ton</i>	<i>N/A</i>
BOULDERS			
<i>Bulk</i>	<i>Random Sizes</i>	<i>\$90</i>	<i>N/A</i>
CRUSHED			
<i>Decorative Aggregate`</i>	<i>1" minus</i>	<i>\$70</i>	<i>100 Sq. ft.</i>
	<i>2" minus</i>	<i>\$70</i>	<i>100</i>

Super Sacked +\$35/ton

ALSO AVAILABLE

f.o.b. Moulton, ID +\$45/ton

f.o.b. Heber City, UT +\$35

f.o.b. Oakley, ID +\$60

f.o.b. Vancouver, WA +\$100

COBBLES AND PEBBLES

Grade	Thickness	f.o.b. Salt Lake City, UT	Approx Coverage/ton
MEXICAN BEACH PEBBLES			
<i>Super Sacked</i>	<i>½ - 1", 1 - 2", 2 - 3", 3 - 5", 5" plus, 8 - 12"</i>	<i>\$370/ton</i>	<i>N/A</i>

ALSO AVAILABLE

f.o.b. Moulton, ID +\$45/ton

f.o.b. Heber City, UT +\$35

f.o.b. Oakley, ID +\$60

f.o.b. Vancouver, WA +\$45

Grade	Thickness	f.o.b. Oakley, ID	Approx Coverage/ton
QUARTZITE COBBLE			
<i>Palletized</i>	<i>3 - 6", 6 - 10"</i>	<i>\$90/ton</i>	<i>N/A</i>
<i>Bulk</i>	<i>3 - 10"</i>	<i>\$32</i>	<i>N/A</i>

ALSO AVAILABLE

f.o.b. Moulton, ID +\$15/ton

f.o.b. Heber City, UT +\$45

f.o.b. Salt Lake City, UT +\$45

f.o.b. Vancouver, WA +\$80



AZTEC GOLD BASALT

Excellent for water features, retaining walls, accent pieces, and more.

Grade	Length	f.o.b. Oakley, ID	Approx Coverage/ton
COLUMNS			
	18" minus	\$200/ton	N/A
	18 - 30"	\$265	N/A
	30 - 42"	\$410	N/A
	Over 42"	\$440	N/A
	Bulk	\$200	N/A
BUBBLERS			
	18" minus	\$390	N/A
Drilled with Sawn Bottom	18 - 30"	\$500	N/A
	30 - 42"	\$750	N/A
	Over 42"	\$875	N/A
RUBBLE AND BOULDERS			
	Bulk	\$220/ton	N/A



Thickness

PAVERS

2 - 2 1/2" \$725/ton 65 Sq. ft.

ALSO AVAILABLE

f.o.b. Moulton, ID +\$15/ton

f.o.b. Heber City, UT +\$45

f.o.b. Salt Lake City, UT +\$45

f.o.b. Vancouver, WA +\$80

CONTINUES

AZTEC GOLD CONTINUED

Grade	Weight	f.o.b. Oakley, ID	Approx Coverage/ton
-------	--------	-------------------	---------------------



BIRD BATHS

Mini	< 10lbs	\$19/ea	N/A
Small	10 -25lbs	\$37	N/A
Medium	25 - 50lbs	\$55	N/A
Large	> 50lbs	\$71	N/A

ALSO AVAILABLE

	f.o.b Moulton, ID	f.o.b. Heber/SLC, UT	f.o.b. Vancouver, WA
Mini	+.01¢	+.23¢	+.40¢
Small	+.19¢	+.57¢	+\$1
Medium	+.38¢	+\$1.13	+\$2
Large	+.80¢	+\$2.25	+\$4

Grade	Thickness	f.o.b. Moulton, ID	Approx Coverage/ton
-------	-----------	--------------------	---------------------

DECORATIVE AGGREGATE

	5/8" minus	\$50/ton	100 Sq. ft.
	2" minus	\$50	100
Super Sacked +\$35/ton			N/A

ALSO AVAILABLE

f.o.b. Oakley, ID +\$15/ton
f.o.b. Heber City, UT +\$45

f.o.b. Salt Lake City, UT +\$45
f.o.b. Vancouver, WA +\$80

Thin Stone Veneer

Genuine Natural Stone with nominal thickness of 3/4 to 1 1/2", weighing less than 15 lbs. per Square foot. Thin Stone Veneer is an excellent, economical option for any project creating the illusion of full bed stone, while requiring no special footings or anchors.



ALPINE

Using nature's casual design, Alpine is a classic mosaic stone pattern with random, irregular shapes.

ALPINE FLATS

All Flats are measured by the Square Foot considering a 3/8 - 3/4 inches joint.

Color **f.o.b. Salt Lake City, UT**

<i>Baker Gold</i>	\$3.50/Sq. ft.
<i>Cherokee</i>	\$2.70
<i>North River</i>	\$4.50
<i>Rustic Moss - Dark</i>	\$4.70
<i>Rustic Moss - Light</i>	\$4.70
<i>Sunrise</i>	\$3.90

f.o.b. Oakley, ID

<i>Autumn Gold</i>	\$3.00
<i>Buckskin</i>	\$3.00
<i>Fish Creek Brown</i>	\$3.00
<i>Mountain Ash Granite</i>	\$7.50
<i>Storm Mountain</i>	\$3.00
<i>Windridge</i>	\$3.00

ALPINE FLATS TUMBLED

f.o.b. Salt Lake City, UT

<i>Cherokee</i>	\$9.30
<i>Sunrise</i>	\$9.30

f.o.b. Oakley, ID

<i>Mountain Ash</i>	\$11.30
---------------------	---------

ALPINE CORNERS

f.o.b. Oakley, ID

<i>Mountain Ash</i>	\$11.75
---------------------	---------

ALPINE CORNERS TUMBLED

f.o.b. Oakley, ID

<i>Mountain Ash</i>	\$13.75
---------------------	---------



Cherokee Shown

CASTLEROCK

Cleanly guillotined from large stones, Castlerock is a rectangular, dressed edge stone of varying heights and lengths.

CASTLEROCK FLATS

All Flats are measured by the Square Foot considering a $\frac{3}{8}$ - $\frac{3}{4}$ " joint.

Color	f.o.b. Salt Lake City, UT
Cherokee	\$6.10/Sq. ft.
North River	\$11.30
Sunrise	\$6.60

f.o.b. Oakley, ID

Storm Mountain	\$9.50
Mountain Ash Granite	\$10.50

CASTLEROCK FLATS TUMBLED

f.o.b. Salt Lake City, UT

Cherokee	\$7.90
Sunrise	\$8.40

CASTLEROCK CORNERS

All Corners are measured by the Linear Foot considering a $\frac{3}{8}$ - $\frac{3}{4}$ " joint

Cherokee	\$10.40/Lin. ft.
North River	\$16.90
Sunrise	\$11.10

f.o.b. Oakley, ID

Storm Mountain	\$16.70
Mountain Ash Granite	\$18.40

CASTLEROCK CORNERS TUMBLED

f.o.b. Salt Lake City, UT

Cherokee	\$12.40
Sunrise	\$13.10



PROMONTORY

Sawn top and bottoms fit together to make a clean contemporary look of coursed stone of specific heights and random lengths with broken ends.

PROMONTORY FLATS

All Promontory Flats are nominal 2, 4, 6" course heights measured by the Square Foot considering a $\frac{3}{8}$ " joint with random uncut ends.

Color	f.o.b. Salt Lake City, UT
Hickory	\$5.50/Sq. ft.
Cherokee	\$4.50
Sunrise	\$6.80
North River	\$6.80
Moonlight Gray	\$7.50
Rustic Moss	\$7.50

f.o.b. Oakley, ID

Autumn Gold	\$6.00
Buckskin	\$6.00
Fish Creek Brown	\$6.00
Mountain Ash Granite	\$10.50
Storm Mountain	\$6.00
Windridge	\$6.00

ADD \$2/SQ. FT. FOR CUT ENDS

PROMONTORY CORNERS

All Corners are measured by the Linear Foot considering a $\frac{3}{8}$ - $\frac{3}{4}$ " joint.

	f.o.b. Oakley, ID
Mountain Ash Granite	\$19.30/Lin. ft.



SAWTOOTH

This natural edge ledgestone of random rectangles is formed by the stone's natural fissures. Sawtooth has a rugged sturdy look and feel.

SAWTOOTH FLATS

All Flats are measured by the Square Foot considering a $\frac{3}{8}$ - $\frac{3}{4}$ " joint.

Color **f.o.b. Salt Lake City, UT**

Cherokee \$6.30/Sq. ft.
Sunrise \$6.80

f.o.b. Oakley, ID

Autumn Gold \$8.70
Storm Mountain \$8.70

SAWTOOTH FLATS TUMBLED

f.o.b. Salt Lake City, UT

Cherokee \$7.30
Sunrise \$7.80

f.o.b. Oakley, ID

Autumn Gold \$9.70
Storm Mountain \$9.70

SAWTOOTH CORNERS

All Corners are measured by the Linear Foot considering a $\frac{3}{8}$ - $\frac{3}{4}$ " joint.

f.o.b. Salt Lake City, UT

Cherokee \$10.90/Lin. ft.
Sunrise \$11.90

f.o.b. Oakley, ID

Autumn Gold \$15.30/Lin. ft.
Storm Mountain \$15.30

SAWTOOTH CORNERS TUMBLED

f.o.b. Salt Lake City, UT

Cherokee \$12.90
Sunrise \$13.90

f.o.b. Oakley, ID

Autumn Gold \$17.30
Storm Mountain \$17.30



WASATCH

Random squares and rectangles with a natural cleft face stacked in a rustic pattern.

WASATCH FLATS

All Flats are measured by the Square Foot considering a $\frac{3}{8}$ - $\frac{3}{4}$ " joint.

Color	f.o.b. Salt Lake City, UT
<i>Baker Gold</i>	\$4.00/Sq. ft.
<i>Cherokee</i>	\$5.70
<i>Moonlight Gray</i>	\$5.50
<i>Sunrise</i>	\$6.50
	f.o.b. Oakley, ID
<i>Mountain Ash Granite</i>	\$10.50

WASATCH FLATS TUMBLED

	f.o.b. Salt Lake City, UT
<i>Cherokee</i>	\$6.70
<i>Sunrise</i>	\$7.50
	f.o.b. Oakley, ID
<i>Mountain Ash Granite</i>	\$11.50

CONTINUES

WASATCH CONTINUED

WASATCH CORNERS

All Corners are measured by the Linear Foot considering a $\frac{3}{8}$ - $\frac{3}{4}$ " joint.

Color	f.o.b. Salt Lake City, UT
Cherokee	\$9.70/Lin. ft.
Sunrise	\$10.60
	f.o.b. Oakley, ID
Mountain Ash Granite	\$18.70

WASATCH CORNERS TUMBLED

f.o.b. Salt Lake City, UT

Cherokee	\$11.70
Sunrise	\$12.60
	f.o.b. Oakley, ID
Mountain Ash Granite	\$20.70

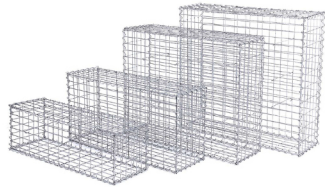
Products listed f.o.b. Oakley also available f.o.b.

Moulton, ID	Add \$0.10/Sq. ft. flats, \$0.15/Lin. ft. Corners
Vancouver, WA	Add \$0.55/Sq. ft. flats, \$0.80/Lin. ft. Corners
Salt Lake City, UT	Add \$0.30/Sq. ft. flats, \$0.55/Lin. ft. Corners

Products listed f.o.b. Salt Lake City also available f.o.b.

Moulton, ID	Add \$0.30/Sq. ft. flats, \$0.55/Lin. ft. Corners
Oakley, ID	Add \$0.35/Sq. ft. flats, \$0.60/Lin. ft. Corners
Vancouver, WA	Add \$0.70/Sq. ft. flats, \$1.00/Lin. ft. Corners

WIRE PRODUCTS



PRODUCT	DESCRIPTION	F.O.B. MOULTON, ID	UOM
BANDING	5/8" X 100 LBS	\$120	ROLL
CHICKEN WIRE	36' X 150'	\$20	ROLL
BASKET WIRE	36" X 100"	\$49	ROLL
TOP WIRE	17 GA X 1/4 MILE	\$12	ROLL
GABION BASKET	100 X 30 X 30 CM	\$13	EACH
GABION BASKET	100 X 50 X 30 CM	\$17	EACH
GABION BASKET	100 X 80 X 30 CM	\$22	EACH
GABION BASKET	100 X 95 X 30 CM	\$25	EACH

PRODUCTION SUPPLIES



PRODUCT	DESCRIPTION	F.O.B. SALT LAKE, UT	UOM
SAW BLADES	12" QUARTZITE	\$41	EACH
	12" SANDSTONE	\$36	EACH
	24" QUARTZITE	\$116	EACH
	24" SANDSTONE	\$109	EACH
	36" QUARTZITE	\$331	EACH
	36" SANDSTONE	\$315	EACH
	40" QUARTZITE	\$375	EACH
	40" SANDSTONE	\$346	EACH
DIAMOND SEGMENTS			
SANDSTONE	24 X 20 X 5.5 MM	\$1.18	BOX
QUARTZITE	24 X 20 X 5.5 MM	\$1.23	EACH
FEATHERS AND WEDGES	3.5" X 3/4"	\$3.39	EACH

CALL FOR PRICING AND AVAILABILITY FROM OTHER SHIPPING LOCATIONS



DEALER PRICE LIST

Effective Date: March 15, 2024

TERMS AND CONDITIONS OF SALE

- Star Stone Sales, LLC sells to Dealers Only. You must be purchasing for resale to qualify as a Dealer.
- Terms are Net 30 days with approved credit; otherwise, shipments must be pre-paid.
- Prices and specifications are subject to change without notice.
- All order acceptance and deliveries are subject to product availability.
- Stone is a product of nature and is, therefore, subject to variations. Because of these variations, Star Stone Sales, LLC is unable to guarantee an exact match within shipments or to previous or subsequent shipments.
- Star Stone Sales, LLC accepts no responsibility for stone once it has been used.
- All prices are f.o.b. prior to freight for full truckload quantities.
- Requests for weight adjustments must be accompanied by Certified Scale light and heavy weights and must be for over 3% of the total shipped.
- No returns will be allowed without prior authorization from the Salt Lake City Corporate Office.

Star Stone Sales, LLC
4040 South 300 West
Salt Lake City, UT 84107

(801) 747-7119

info@starstonesales.com • www.starstonesales.com

